

Babylon

„with one voice“

SAP R/3 Workshop

3rd of July 2003



Agenda

- **Overview of Degussa**

Business Unit and Business Lines: BU SU, BL BW, BL CS
Service Units / Management Services / Inhouse Consulting

- **The Project Babylon**

Starting situation and goal of the project
Project start and organization
Project procedure / changing of hard ware set up
Project result

- **Necessities and possibilities for Stockhausen**

Changing from LAN to WAN
Future options

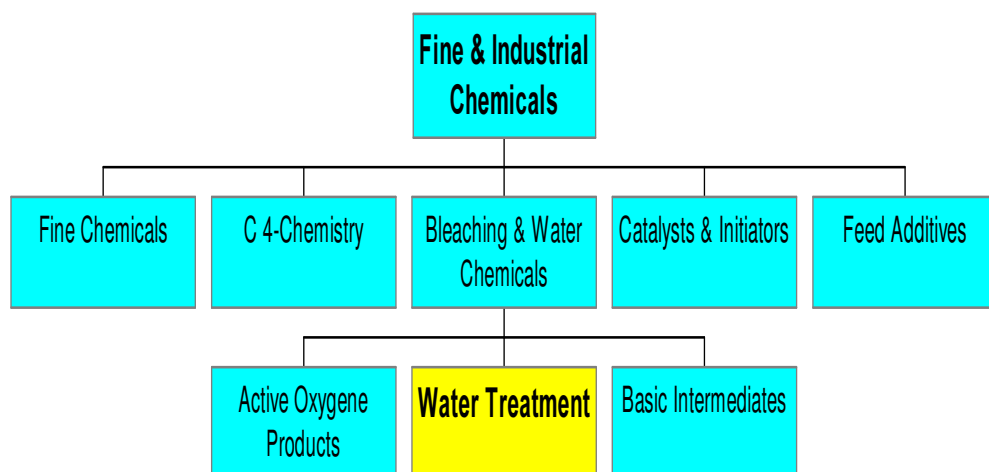
Overview of Degussa

Construction Chemicals	Fine & Industrial Chemicals	Performance Materials	Coatings & Advanced Fillers	Specialty Polymers
Admixture Systems North America	Fine Chemicals	Superabsorbents	Coatings & Colorants	High Performance Polymers
Admixture Systems Europe	Bleaching & Water Chemicals	Care Specialties	Aerosil & Silanes	Specialty Acrylics
Admixture Systems Asia/Pacific	C ₄ -Chemistry	Oligomers & Silicones	Advanced Fillers & Pigments	Methacrylates
Construction Systems Americas	Catalysts & Initiators	Food Ingredients		Plexiglas
Construction Systems Europe	Feed Additives			

Sales	TEUR	11 765
EBIT	TEUR	936
Employees		47 623

from April 1, 2003

BL Water Treatment



Products:

PRAESTOL

**Flocculants
for water treatment**

PRAESTARET

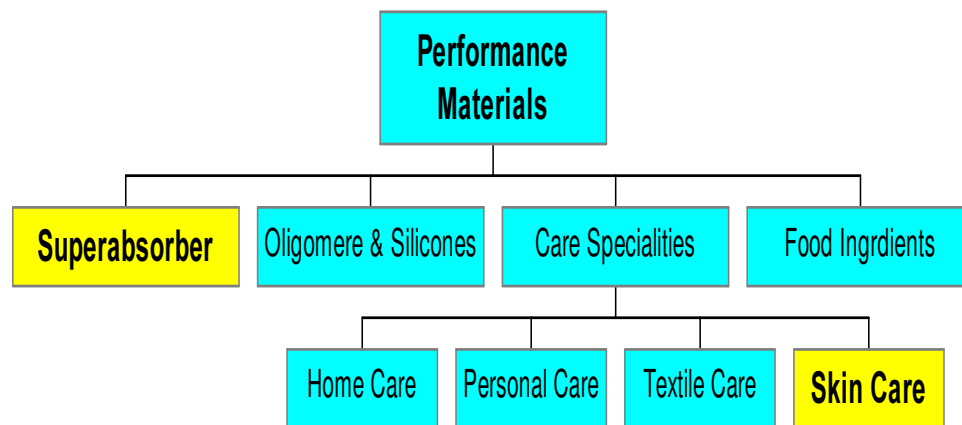
**Retention agent
for the paper industry**

Sales of Division
EBIT
Employees

TEUR 2915
TEUR 181
6829

BL WT
500

BU Superabsorber / BL Skin Care



Products:

FAVOR

**Superabsorber
for hygienic industry
(diapers, adult care)**

STOKO

**Industrial skin protection
(protection, cleaning,
care)**

Sales of Division
EBIT
Employees

TEUR 1969
TEUR 164
2868

BU SU	BL SC
450	225

Most Important Locations Stockhausen *



The traditional legal structure is still existing:

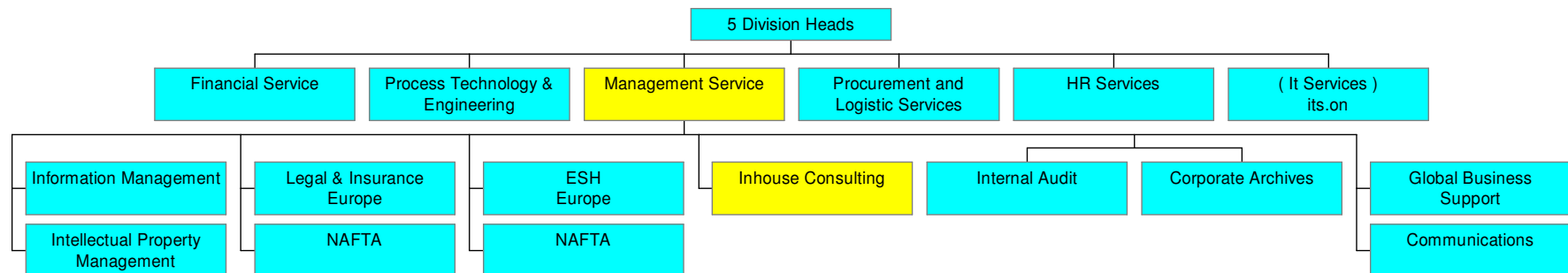
Stockhausen GmbH
Stockhausen Inc

.....

* without sales offices

Organization of multi User Services, Sites and Regions

Services



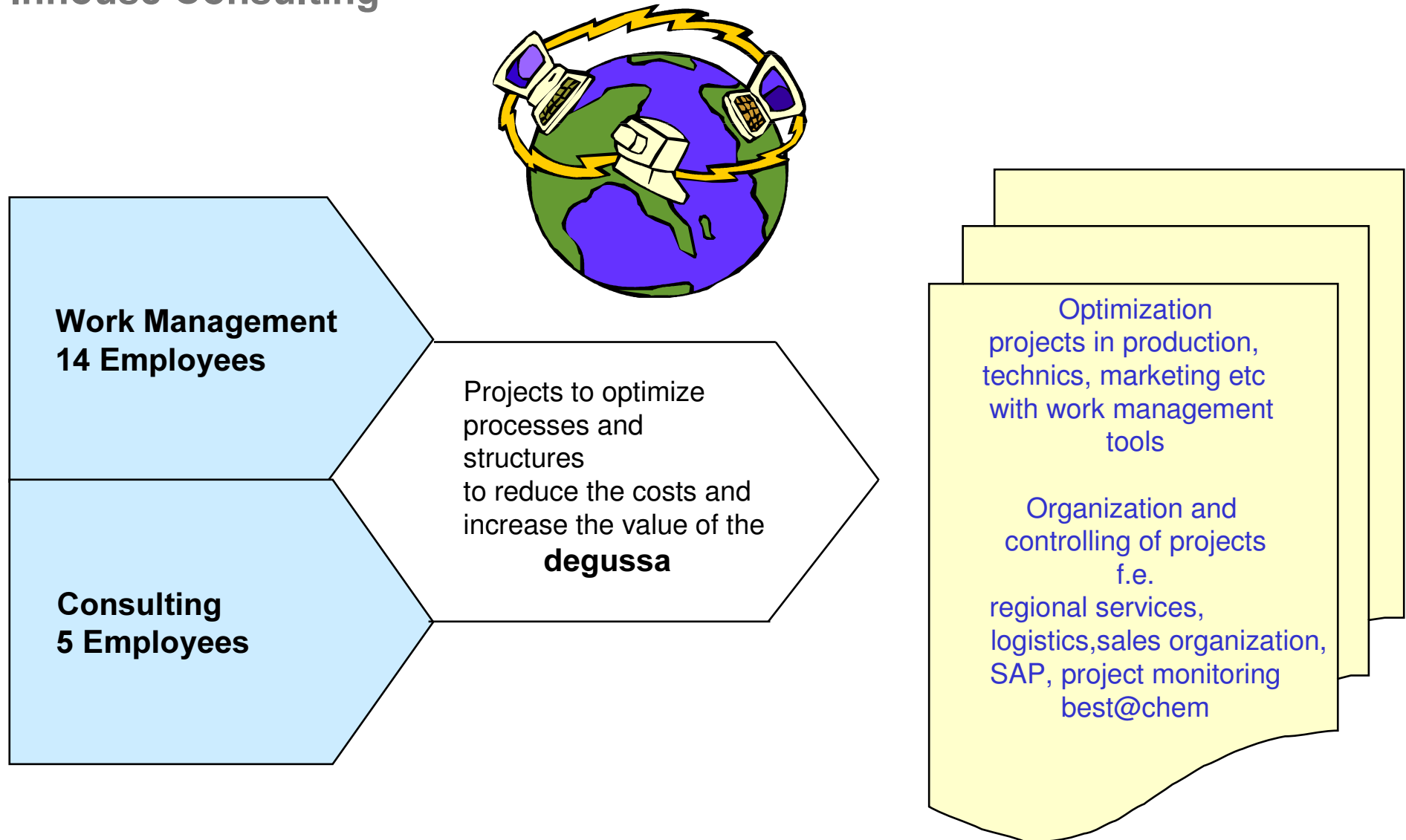
Sites

In principle the same organization structure for multi user sites

Regions

Different structure with Boards and Customer Councils in the defined regions

Inhouse Consulting



Agenda

- **Overview of Degussa**

Business Unit and Business Lines: BU SU, BL BW, BL CS
Service Units / Management Services / Inhouse Consulting

- **The Project Babylon**

Starting situation and goal of the project
Project start and organization
Project procedure / changing of hard ware set up
Project result

- **Necessities and possibilities for Stockhausen**

Changing from LAN to WAN
Future options

SAP Landscape of Degussa

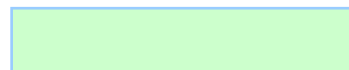
Construction Chemicals	Fine & Industrial Chemicals	Performance Materials	Coatings & Advanced Fillers	Specialty Polymers
Admixture Systems North America	Fine Chemicals	Superabsorbents	Coatings & Colorants	High Performance Polymers
Admixture Systems Europe	Bleaching & Water Chemicals	Care Specialties	Aerosil & Silanes	Specialty Acrylics
Admixture Systems Asia/Pacific	C ₄ -Chemistry	Oligomers & Silicones	Advanced Fillers & Pigments	Methacrylates
Construction Systems Americas	Catalysts & Initiators	Food Ingredients		Plexiglas
Construction Systems Europe	Feed Additives			



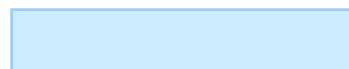
Former SKW, principle three organizations / systems CC, Goldschmidt, Food Ingredients



Mixed BU, A&S harmonized SAP (CHARME)



Former Degussa, with central SAP system



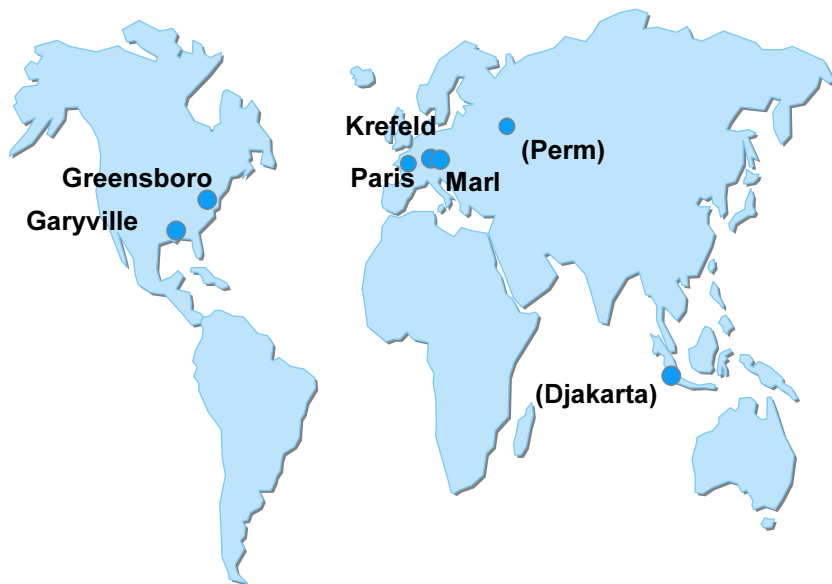
Former Hüls, different systems, Creanova, Oxeno, Röhm, Stockhausen

from April 1, 2003

Main SAP Projects of Degussa

Project	Time	Goal	Result	Remark
IT 2000 +	1999 /2000	one harmonized SAP system for Degussa-Hüls	Changed to best@chem	Anderson Consulting
best@chem	2000 - ?	one harmonized SAP system for Degussa	changed content from SAP to collection of all projects	Deloitte Consulting left when changing the content
CHOSEN	2001 - ?	one harmonized SAP system for Degussa in the US	realized for some BU	roll out ?

Original Goal of the Project



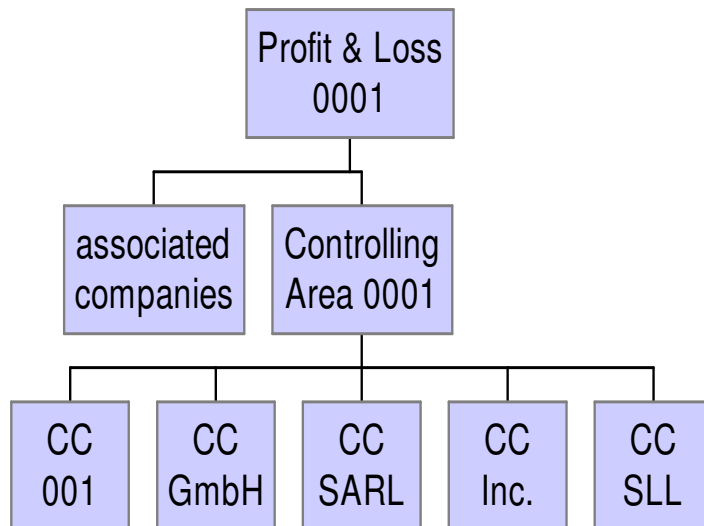
In Scope:

Bringing all Stockhausen SAP systems together

Keeping all functionalities of both systems

The Goal of the Babylon Project is to bring all Stockhausen SAP Systems together

Future Company Codes Stockhausen



Method

Locating the two systems in one system

System in Krefeld will be expanded to meet the requirements of Greensboro/Garyville

One SAP System on one hard-ware platform for Stockhausen

Not in scope

Fully harmonization of the systems
(Customer, Article Nr. etc.)

Harmonization or reengineering of processes

EH& S is not used in GSO

In scope

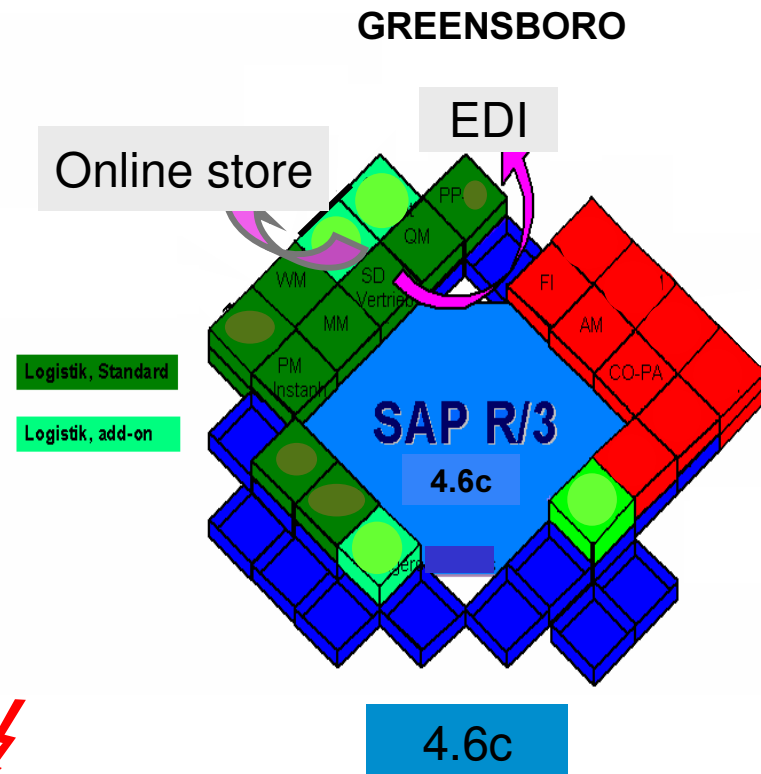
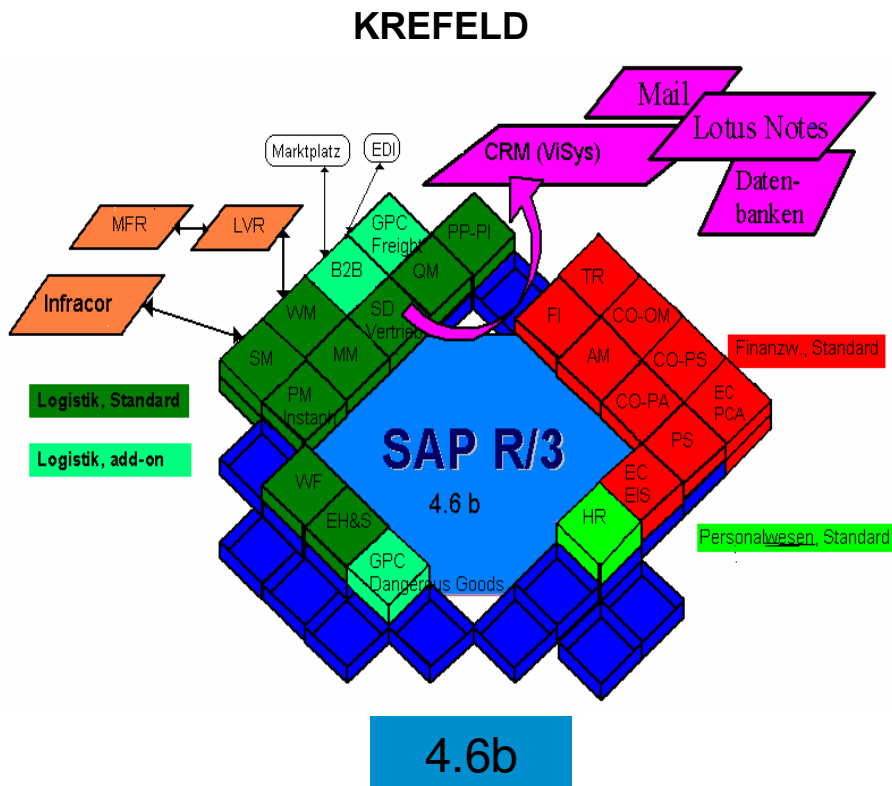
Keeping all functionalities of both systems

Some defined small modifications / harmonizations

local server (interface) for GBO WMS

Results of the pre-project Babylon

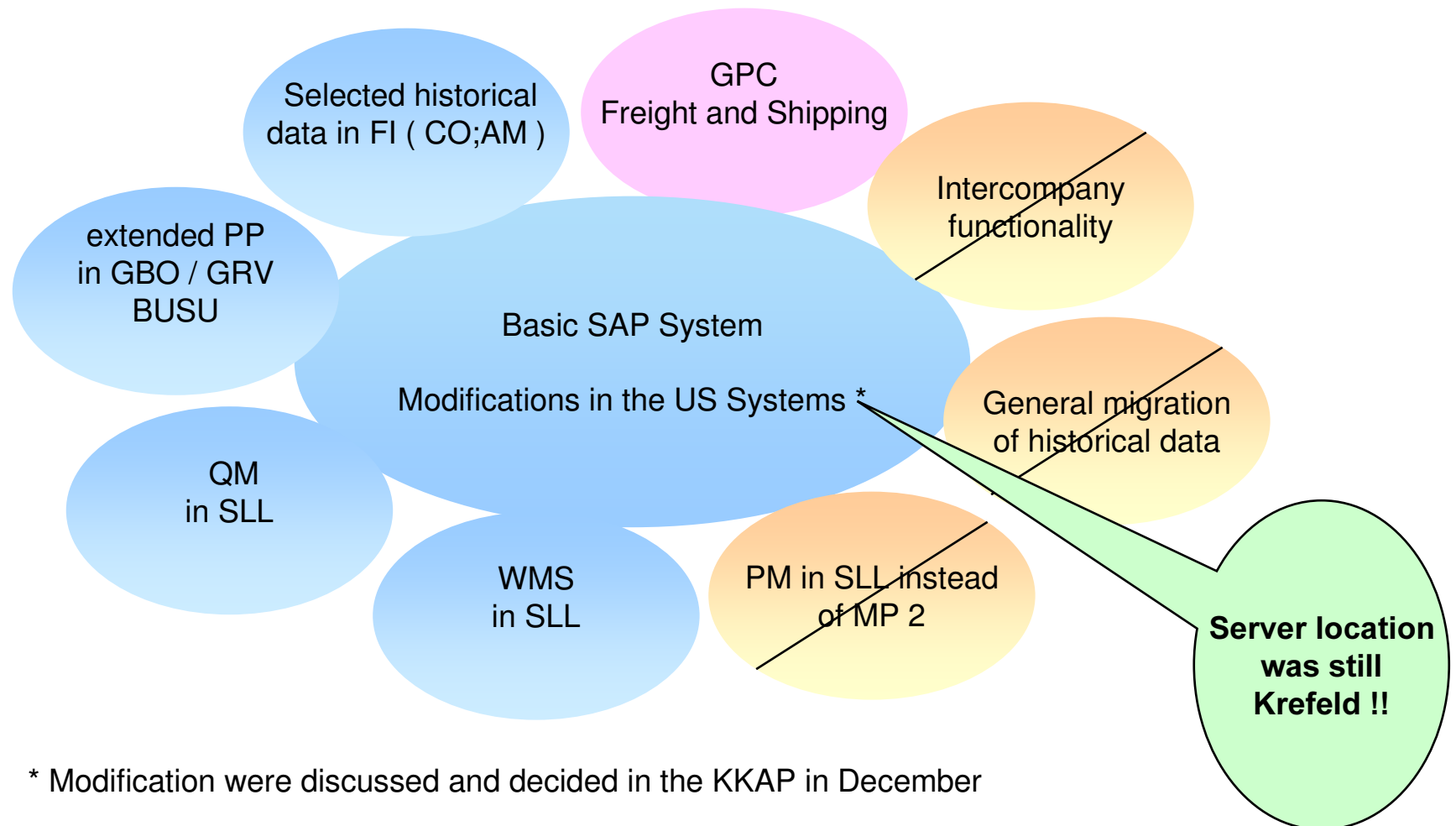
LANDSCAPE KREFELD AND GREENSBORO



There are no major difficulties to bring the two SAP systems together
The absorbing system should be P 10

The Content was finally approved in the SC Meeting on December 09th

FINAL CONTENT OF THE PROJECT



* Modification were discussed and decided in the KKAP in December

Start of the Babylon Project

1. First idea of collocating the two SAP systems
2. Mandate its.on to verify the feasibility of the collocation with a pre-project and submit a offer for the realization
 - Including:
 - Screening of all functions and subfunctions of the system
 - Searching for „no-go“ criterias
 - Estimate complexity
6. Offer from other Consulting Companies
 - Combine the two consultants - assignment dominated by strength not by costs
7. Information and principle agreement with the BU BW and CS in June 2002
8. Information of the Service Units of the Stockhausen GmbH
9. Information of CC and approval of the Board of Management of the Degussa on June 28th
10. Final negotiation and signing of the contracts with its.on and jwconsulting in July

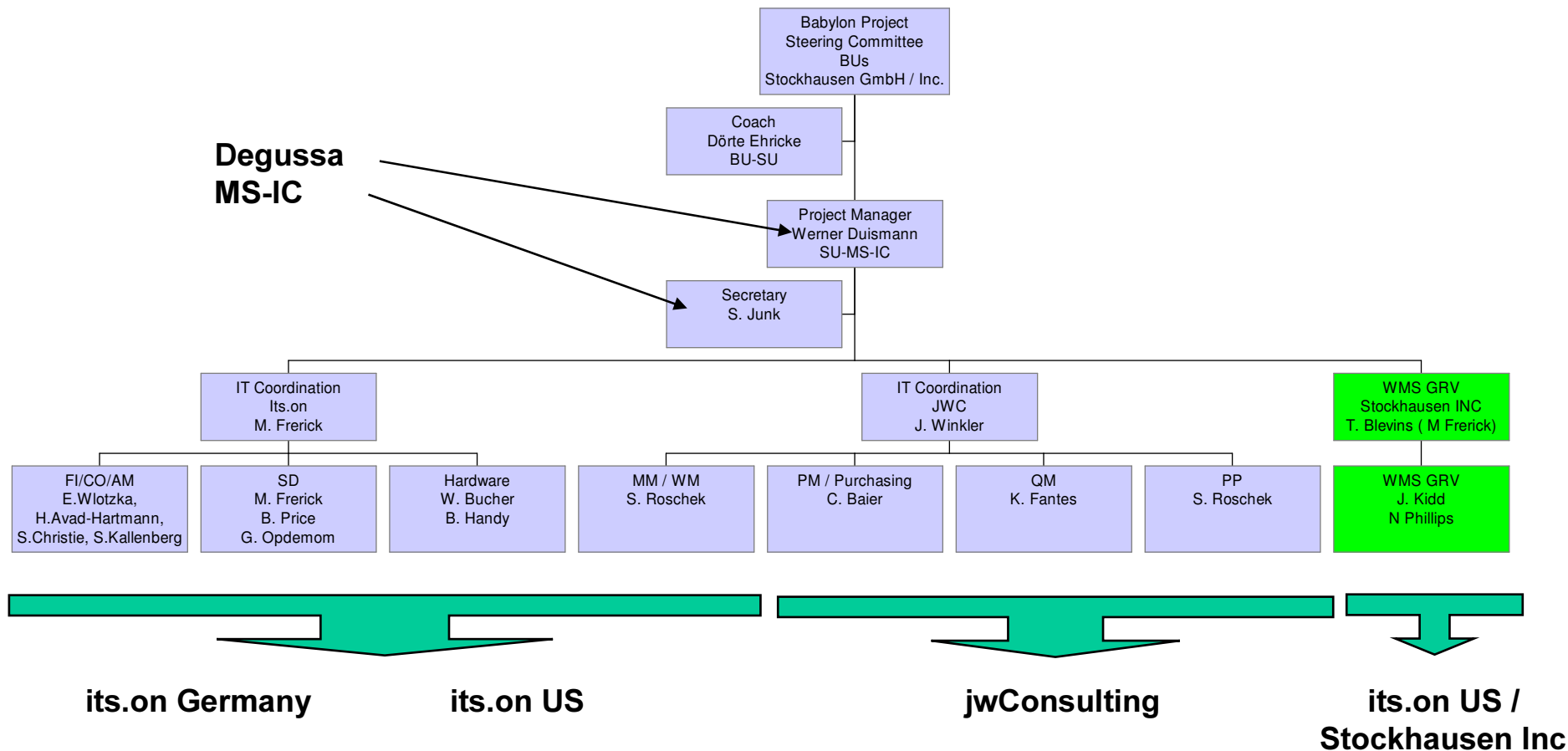


Kick-off in Greensboro on July 22nd

in Krefeld August 05th

The Project Organisation includes Consultants from different Companies

PROJECT ORGANISATION



Babylon Team Members I

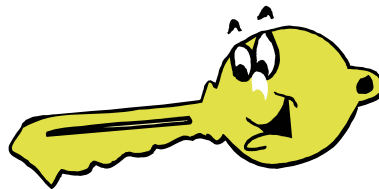
SD

Consultants its.on:

Matthias Frerick
Georg Opdemom
Brenda Price
Nell Phillips

BU Modul Manager

Stacy Billos



Others and the BU/SU represented:

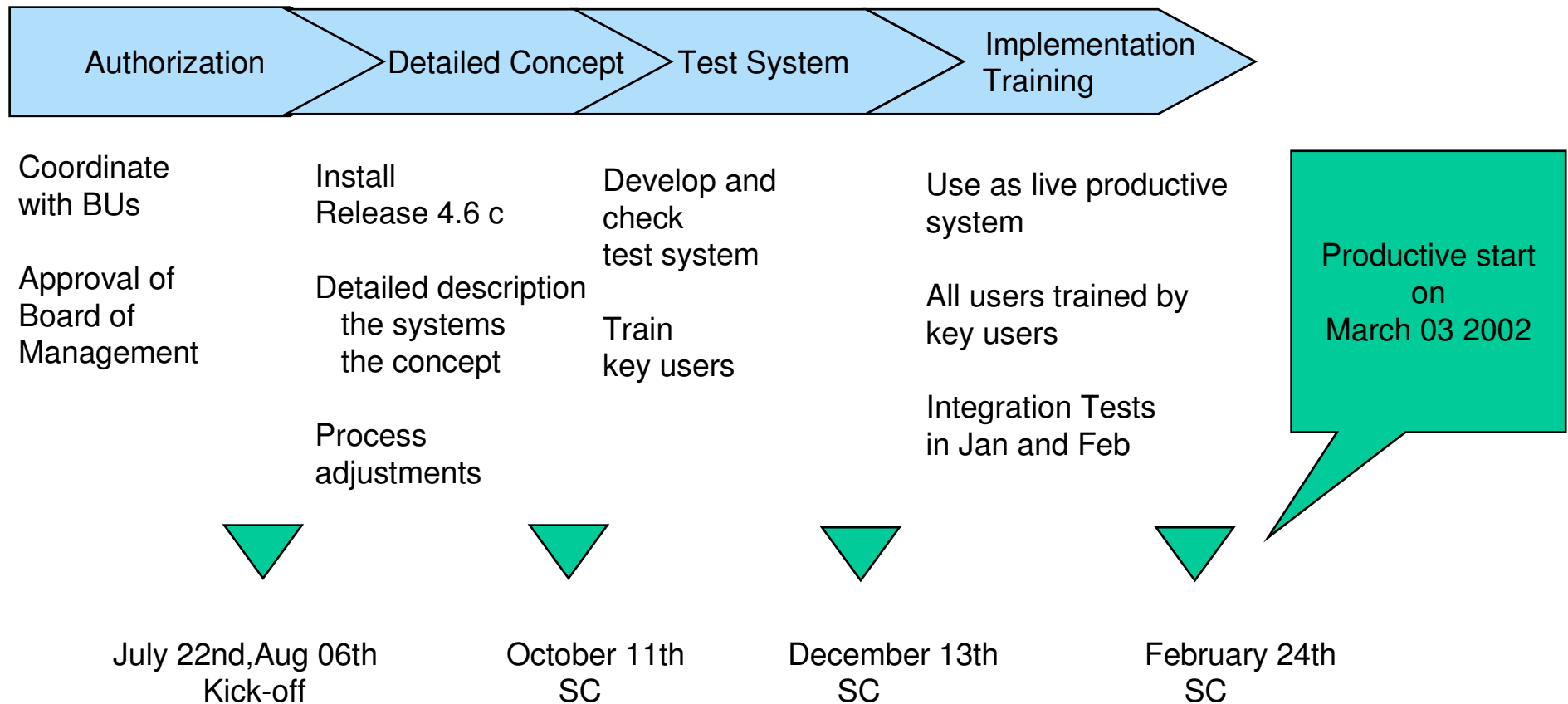
Greensboro/Garyville

Lynn Royal	Phyllis Nix
Tim Dukes	BGB
Armant Falgoust	(Kathy Jenkins)
Jim Smalley	
Pat Mc Gill	
Barbara Wood	
Sandy Surrat	
Kathy Jenkins	

Krefeld/SARL:

Fr. Bourdon	Fr.Burr
Hr. Trogemann	Fr. Lallart
Fr. Maas	
Hr. Bremus	
Hr. Nahler	

Original Timetable of the Project



The Team has changed the Time Schedule for Krefeld

PROJECT DESCRIPTION (THIRD STAGE)

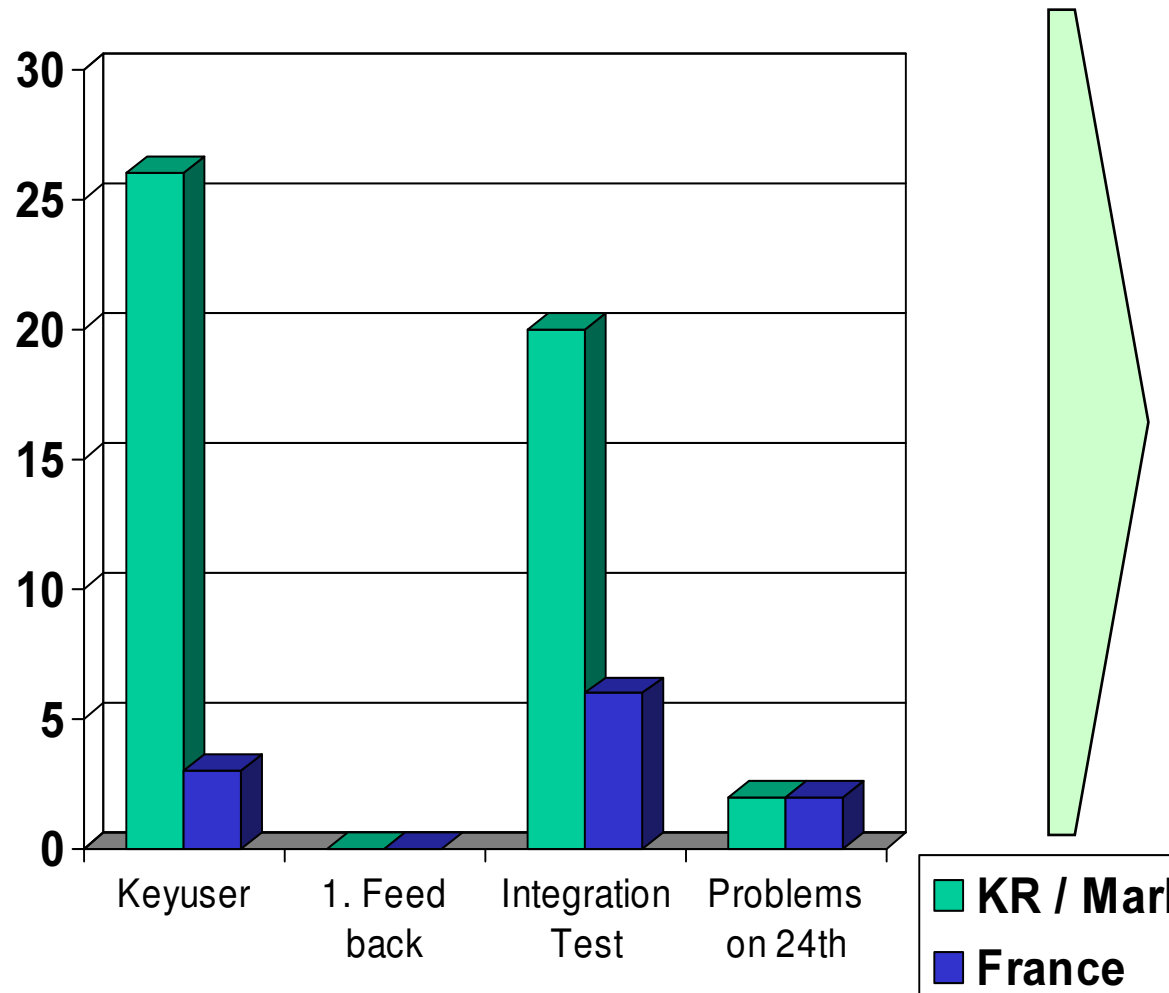
	Meeting	Location	Objective	Other IT actions
09.12.2002	SC	KR	Final approval of the project content / discussion and approval of the project procedure	Preparation for moving to FFM
09.12.2002		GRV	Productive start of WMS in GRV	
from 09.12.2002		KR / GBO / GRV	Possibility for individual tests on T 21	
06.01.2003	Jour-fix	KR		
09-10.01.2003	workshop	KR	US keyuser in KR (MM, WM, PP)	
until 19.01.2003		KR / GBO / GRV	Preparation of the first integration test Written approval of the SC for changed schedule	
14.01.2003	Keyuser	KR / GBO	Preparation of the first integration test (GBO its.on US only)	
20. - 24. 01.2003		KR / GBO / GRV	Integration Test	
23.01.2003	Keyuser Jour-fix	KR	Discussion about testing	
24.01.2003	Keyuser	KR	Approval keyuser for going live	
28.01.2003		KR	Productive start for KR (incl. SARL) Troubleshooting	

The Team has changed the Time Schedule for Krefeld

PROJECT DESCRIPTION (THIRD STAGE)

04.02 -07.02. until 17.02.2003	Work-shop	GBO	Training and testing for US keyuser on T21 together with all consultants Migration of all US master data to P10	E20 and T21 moving to Ffm Latest date for moving P10 to Ffm
17.02.2003	Jour-fix	KR		
20.02.2003			End of testing on T21 for US users (including balance sheet and inventory)	
21.02.2003		GBO / GRV	Approval of the US keyuser for going live	
24.02.2003	SC		Approval of the SC for going live	
03.03.2003		KR / GBO / GRV	Productive start Babylon for all user Troubleshooting	
week 10 2003	Keyuser	KR	Stess test and meeting with keyuser KR	
11.-14.03.2003	US keyuser	GBO / GRV	Discussion about the project	
17.03.2003	Jour-fix	KR	End of the project (documentation included)	

In Krefeld (Marl, France) all detected Problems could be solved before going live



- Nearly no feed back from Dec. 9th to Jan.20th (individual Testing)
- Feed back on Jan. 24 from 26 users
- 4 remaining problems but approval for going live from all users (24th)
- All problems could be solved before productive start on Jan 28th

Reasons for the Deviations in the US Time Schedule

- No Training and testing with the key users in the 3rd work shop in GBO on November 21 - 27th
- Very few individual testing in December and January
- Problems with the first integration test on January 20 - 24th

Unexpected hard ware and net work problems

Deviations from the time schedule in the FI / CO area

- Continuing of these problems in the following project time, including the 4th work shop in GBO on February 4th - 7th
- No approval for going live by the US key users after the second integration test on February 17th- 20th (list of 22nd show stoppers)



- 5th of May as new date for going live, decided by the team on February 22nd, approved by the Steering Committee on February 24th

The detailed Hardware Solution is Part of SLAs with its.on

its.on HARDWARE CONCEPT

- **Move R/3-servers to central data center at Frankfurt until 03 2003**

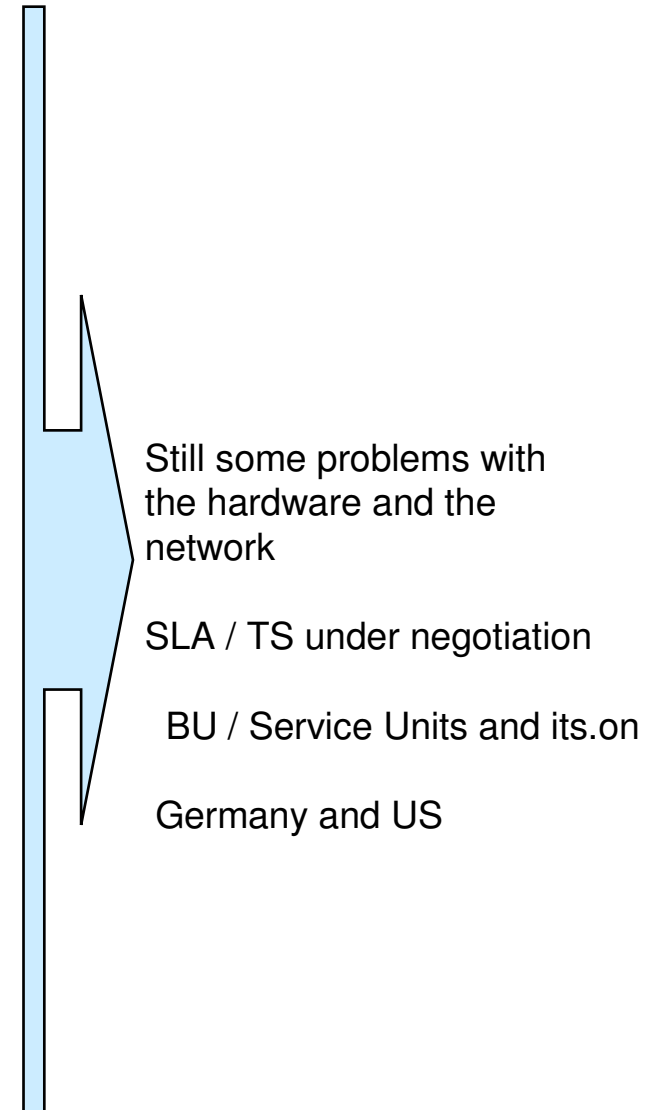
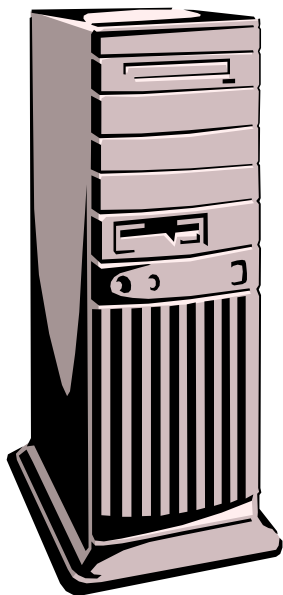
E20 and T20 on February 12th
 P10 on Feb 22nd - 23rd (**not realized**)
 T21 not further used for SAP
 Safety by second parallel system
 24 h service at the data center
 Maintenance shut downs on
 Saturday

- **Cable connections**

GRV / GBO in Nov. 2002 512 kbit (1,5Mbit *)
 GBO / KR Jan 14th / tested Feb 5th 512 kbit (1,5Mbit *)
 Mobile 768 kbit (3Mbit *)
 Back up via Piscataway

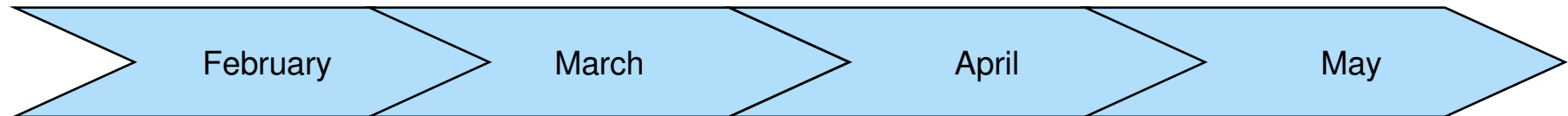
KR Essen 2Mbit add 2Mbit before going live
 Back up 2Mbit
 Essen Ffm 34 Mbit

* techn. Possible, smaller figure rented



The US Going-live was on May 5th

TIME TABLE / MILESTONES



Continuous project work

04.-07. Work-shops
GBO training and testing

US master data on P10 (-17.)

Integration test 10.-14.

No approval for Going live US by Key user on 21.

Continuous project work

11.-14. Work-shops
GBO/GRV new time schedule

Various integrated and separate tests

SC Meeting on 24.02

Continuous project work

15.-17. Work-shops
GBO/GRV new time schedule for going live

Various integrated and separate tests

Reduced consultant support around eastern

Start going live on 28th / consultants in GBO and GRV

Going live on May 5th followed by trouble shooting

20.-22. Work-shops GBO/GRV define final work

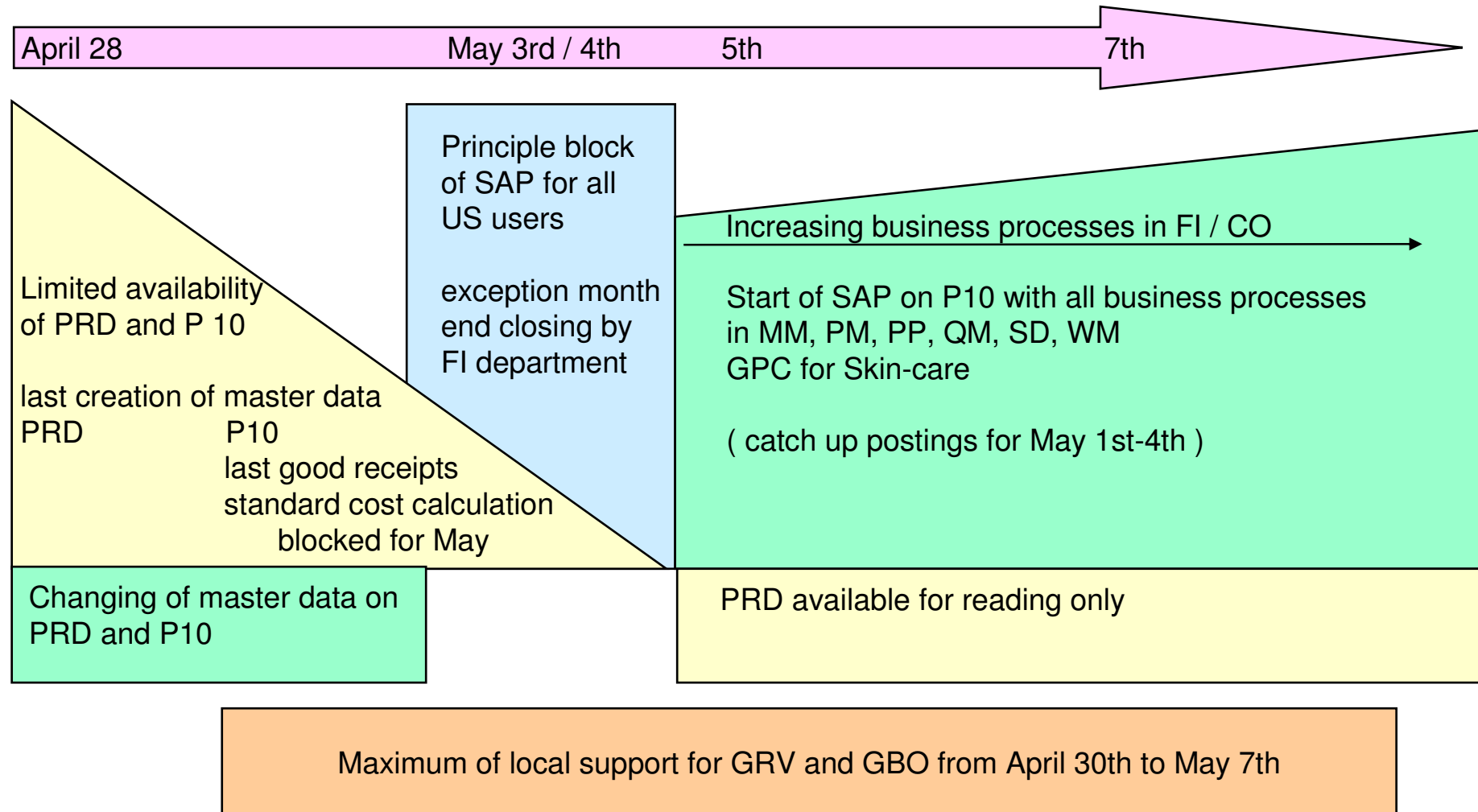
Hand over of jwc responsibility to its.on (-23.05.)

and 11.06.

The Handling of Master Data in the Transition Period was defined and communicated

Module	Object	Create	Change	Delete
FI	Defined Data Cost Center GL Account	PRD	PRD and P10 Project team only "	PRD and P11
SD	Defined Data	PRD and P10	PRD and P10	PRD and P10
MM/ PP / WM	Defined Data	PRD and P10	PRD and P10	PRD and P10
QM	Defined Data	PRD and P10	PRD and P10	PRD and P10
PM / MM Purchasing	Defined Data	PRD and P10	PRD and P10	PRD and P10

Going live procedure and support for GBO and GRV

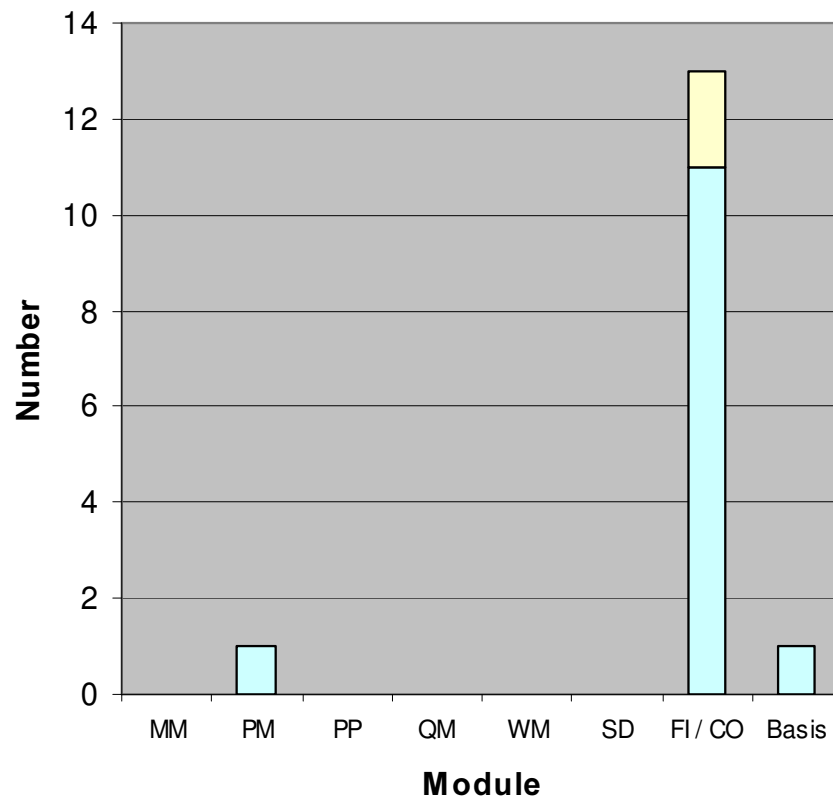


Support for Going Live

Name:		Phone:	e-mail:	SAP-Modul:	Day / Time (et)
Baier, Christian	Germany	(01 70) 4 84 01 19	c.baier@jwconsulting.de	PM/Purchasing	- 4:00 pm
Bucher, Werner	Germany	(01 73) 8 80 86 27	werner.bucher@stockhausen.com	Hardware Networks	- 4:00 pm
Duismann, Werner	GBO	(01 51) 15 10 10 43	werner.duismann@degussa.com	General	30.04.-03.05
	Germany				- 4 :00
Fantes, Kurt	GBO	(01 72) 9 41 44 96	k.fantes@jwconsulting.de	QM	01. -07.05.
				PM/Purchasing	
Frerick, Matthias	Germany	(01 60) 7 25 83 13	matthias.frerick@degussa.com	SD	- 4:00 pm
Kidd, James	USA, GRV	336 333 3572	james.kidd@degussa.com	WM/PP/MM	
Opdemom, Georg	GBO		georg.opdemom@degussa.com	SD	01. -07.05.
Price, Brenda	USA, GBO	336 333 7542	brenda.price@degussa.com	SD	
Roschek, Steffen	GBO	(01 77) 3 26 01 24	s.roschek@jwconsulting.de	WM/PP/MM	30.04.-07.05
Soebronto, Handoko	USA, GRV		handoko.soebronto@degussa.com	FI (CO/AM)	06. -07.05
Wlotzka, Eberhard	GBO	(01 73) 9 64 97 29	eberhard.wlotzka@stockhausen.com	FI (CO/AM)	01. -07.05.

Open issues on June 2nd /12th

Open issues per module (June 2nd)



PM completed on June 5th

FI / CO 2 additional issues
(17 mandays, April 18th)
Budget figures 2003,2004

11 old issues main points:

- still existing errors
- missing reports
- migration of historical data and budgets

Basis still performance problems

- continuous improvement
- new server in Ffm mid of July

Hand over of the modules supported by jwc

- Documentation for all modules supported by JW (QM, PP, MM, PM, WM) is delivered to the appropriate its.on module responsible by 03/31/03
- Documentation is read and questionnaire as well as agenda for hand over-meeting is prepared by its.on module responsible
- Hand over-meeting have to be scheduled between its.on module responsible and appropriate JW consultant. Both parties are asked to get in contact with there counterpart (Team set up proposal see below)
- Following teams have been proposed:

QM/PP	Fantes/Roschek	-	Schleiden/Gerritzen
(QM transition from JW to its.on US (James Kidd) should take place during Integration Test week (week 13) and/or Go-Live week).			
MM-INV/WM	Roschek	-	Trunke
MM-PURCH/PM	Baier	-	Dillmann

Meetings should take place in week 20 or 21
- Hand over protocol has to be prepared during hand over meeting. It has to consist of the parts module documentation, content of hand over meeting and open issues.
- The hand over protocol has to be distributed to the project management (Dr. Duismann) and to the system responsible of the appropriate module.

Agenda

- **Overview of Degussa**

Business Unit and Business Lines: BU SU, BL BW, BL CS
Service Units / Management Services / Inhouse Consulting

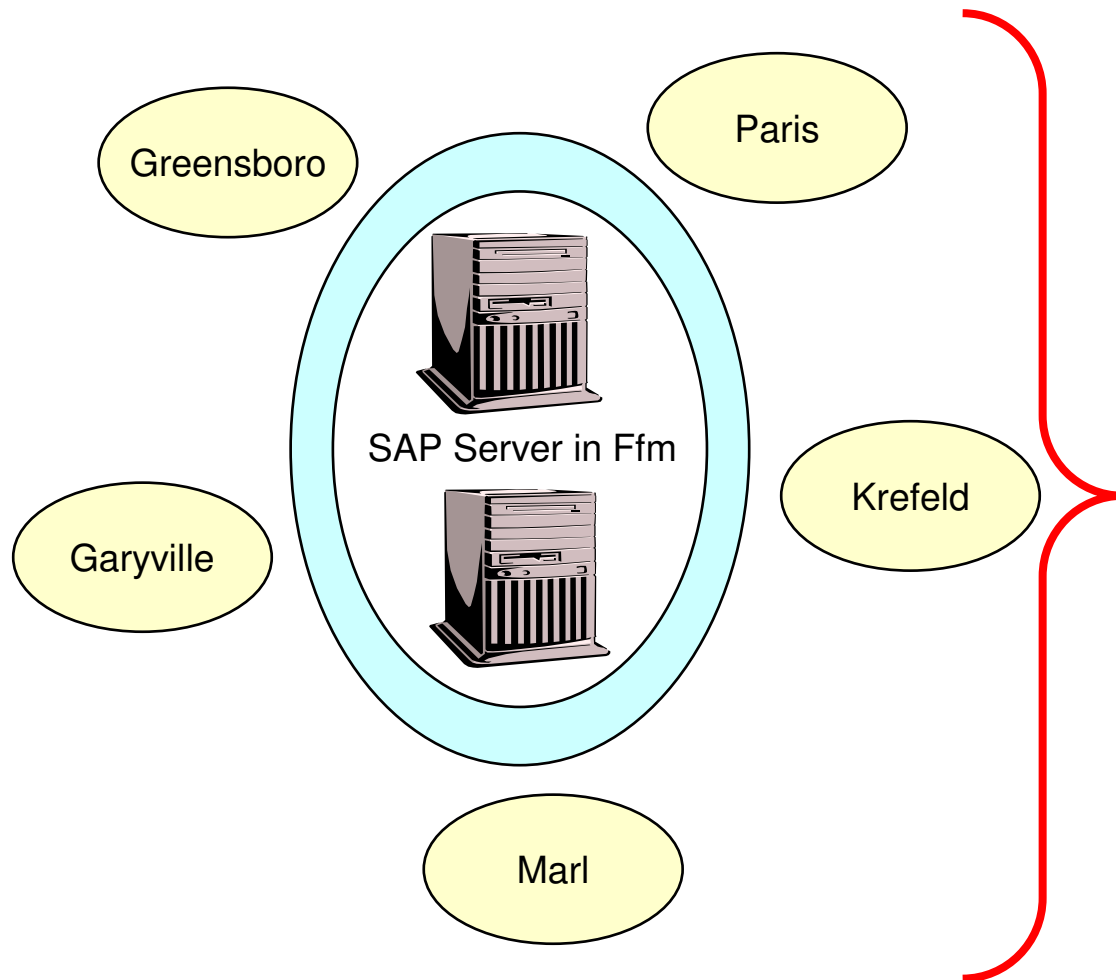
- **The Project Babylon**

Starting situation and goal of the project
Project start and organization
Project procedure / changing of hard ware set up
Project result

- **Necessities and possibilities for Stockhausen**

Changing from LAN to WAN
Future options

Some remarks about the System



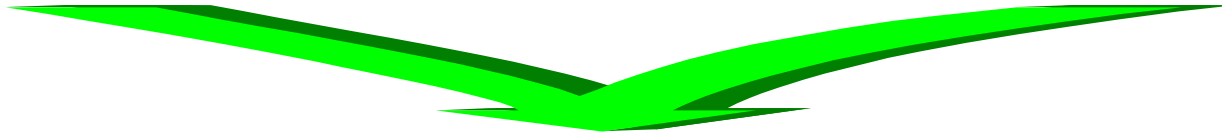
Stockhausen now has a state of the art IT / SAP system with:

- central server solution
- partly harmonized and extended SAP solution, f.e.
 - Production planning and calculation
 - GPC
 - WMS and QM in GRV
- Partly harmonized consistent master data
- Reduced number of modifications
- Possibilities for future extensions for locations and systems

Recommendations of the team I

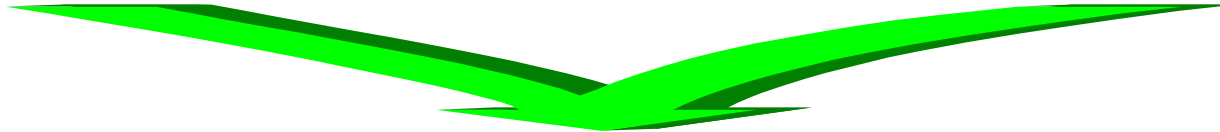
SAP knowledge

Different knowledge about the possibilities in the SAP in the locations



Training is necessary in the US

There need to be minimum two people who must be trained to become key users in Garyville

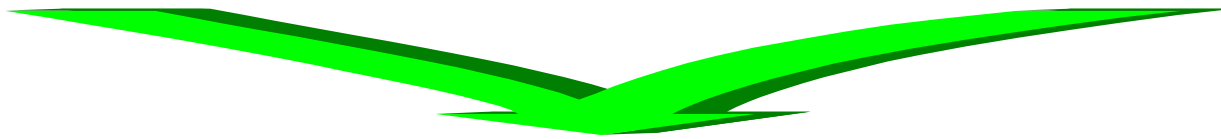


The BU SU decided to have a training program in the US

Recommendations of the team II

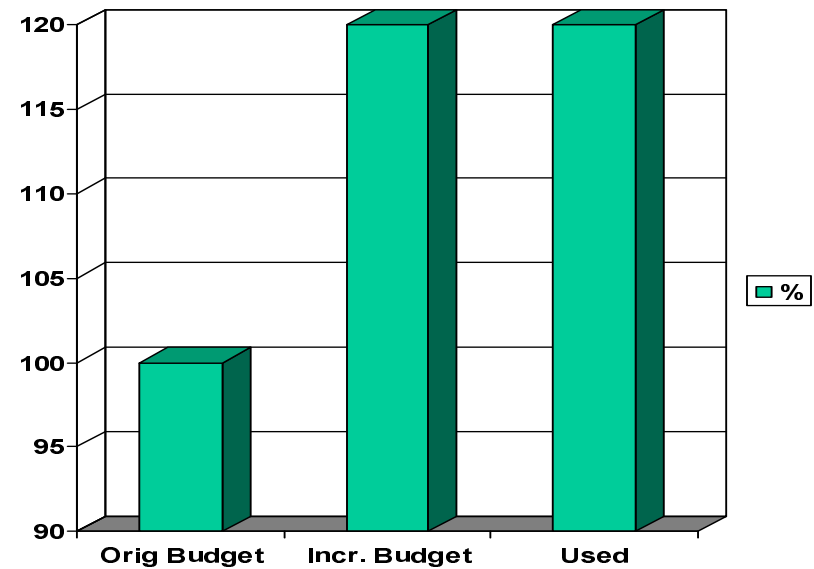
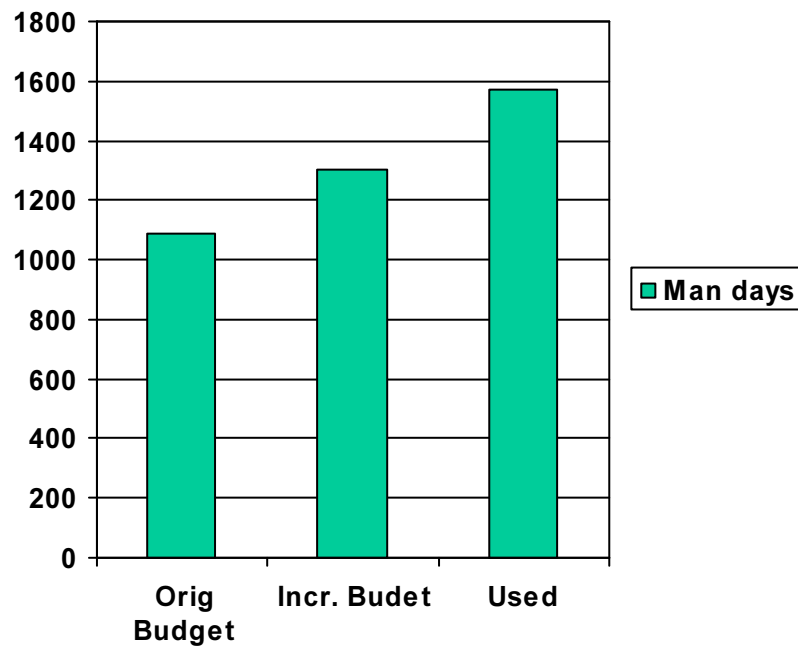
System developments

- ➡ All consultants recommend a deeper harmonization of the system (material masters, laboratory datas, CO assignments)
- ➡ Further reduction of modifications
- ➡ Installation of PM in Garyville
- ➡ Consequent use of all possibilities in the SD module (available to promise / order handling)



The defined „System Responsible“ employees have to take over the global responsibility for their part of the SAP system, every change in the system has to be approved

The Cost stay in the increased Budget



Back up

System- and Modul Responsible P10/P80 (I)

Under discussion

Working Area	System Responsible	its.on – Modul Responsible
SAP-General	Opdemom	Wlotzka
Enterprise Structure	Opdemom	Wlotzka
FI Financial Accounting	D: Beyer F: Goberville U: Duncan	NN Wlotzka
TR Treasury	Beyer	Wlotzka
CO Controlling	D: Willemsen F: Goberville U: Duncan	NN Wlotzka
EC Enterprise Controlling	D: Willemsen F: Goberville U: Duncan	NN Wlotzka
Logistic General inclusive: - Material Master - Material Master Workflow	Leurs U: Tyson	Trunke U: NN
EH&S Environment Health & Safety/ Dangerous Goods (GPC)	P10-D: Dr. Redlof P80-D: Dr. Redlof P10-U: Downey	Klemenz

System- and Modul Responsible P10/P80 (II)

Under discussion

Working Area	System Responsible	Its.on – Modul Responsilbe
MM-BEST Inventory Management inclusive - WM - HRL Linn - External Connection GBO, GRV	P10-D: Leurs P10-D: Effmert P10-F-BW: Burr P10-F-SC: Lallart P10-U: Kidd P80: Trogemann	Trunke U: NN U: Kidd
MM-PUR Purchasing inclusive - CC-Chemplorer	P10-D-S4: Dettmann P10-F-BW: Burr P10-F-SC: Lallart P10-U: Ferrell P80: Trogemann	Dillmann U: NN

System- and Modul Responsible P10/P80 (III)

Working Area	System Responsible	Its.on – Modul Responsilbe
SD Sales inclusive - SD-Order - SD-Billing - Intercompany Processe - Plants in foreign countries - VISYS - Tec4Water - Werkspersonalverkauf	P10-D-BW: Opdemom P10-D- SC:Selakovic P10-D-SU: Ehricke P10-F-BW: Burr P10-F-SC: Lallart P10-U-BW: McGill P10-U-SC: Jenkins P10-U-SU: Billos P80: Trogemann	Looschelders Price
- Internet – Online Store - ALE / EDI	P10-U: Kidd	Kidd
SD Shipping Transportation, GPC- Freight	P10-D: Effmert P10-D: Nahler P10-F: Meyer P10-U: Garland P10-U: Bennett P10-U: Jenkins P80: Trogemann	Looschelders U: Price

Under discussion

System- and Modul Responsible P10/P80 (IV)

Under discussion

Working Area	System Responsible	Its.on – Modul Responsible
PP/PI Production Planning	P10-D-SU: Ehricke P10-D-SC: Kehren P10-D-BW: Vonken P10-U-SU: Dukes P10-U-BW: Owen P10-U-SC: Owen P80: Trogemann	Gerritzen U: Kidd
PS Project System	D: Rahusen D: Willemsen	Wlotzka
Authority	For each Working Area the System Responsible	Dillmann (Back-Office: Handy, Trunke)
Basic	Bucher	Bucher Handy

System- and Modul Responsible P10/P80 (V)

Under discussion

Working Area	System Responsible	Its.on – Modul Responsible
MM-KON Valuation	D: Beyer F: Goberville U: Duncan	Dillmann U: NN
QM Quality Management	P10-D-SU: Wendland P10-D-BW: Dr. Gebauer P10-D-SC: Dr. Daniel P10-U-SU: Fields P10-U-BW: Rash P10-U-SC: Nimtz	Kidd Schleiden
PM Plant Maintenance Inclusive - PM-SM-Interface Marl	D: Rahusen U: Wiedbusch	Dillmann Kidd